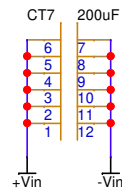
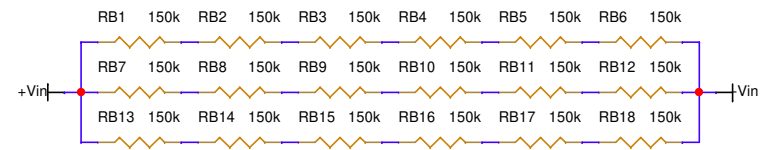


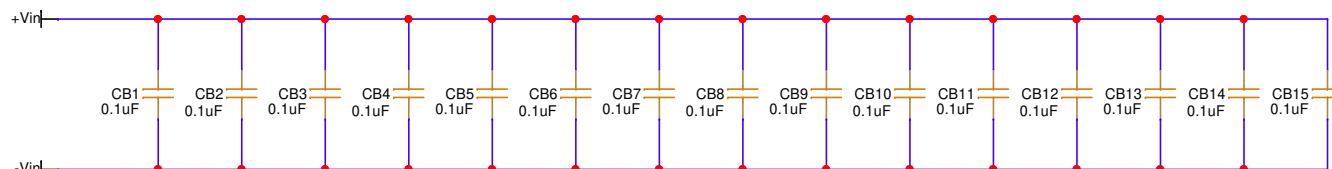
Alternate bulk capacitor configuration



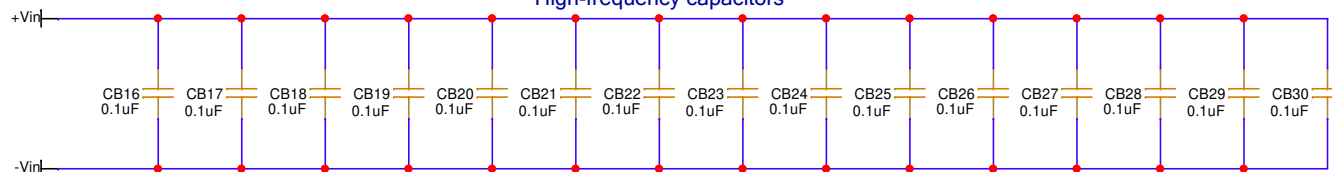
Bulk capacitor - Populated across CT1-CT4



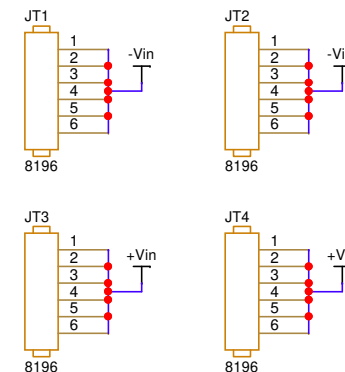
Safety Bleeder Resistors for Cap Bank



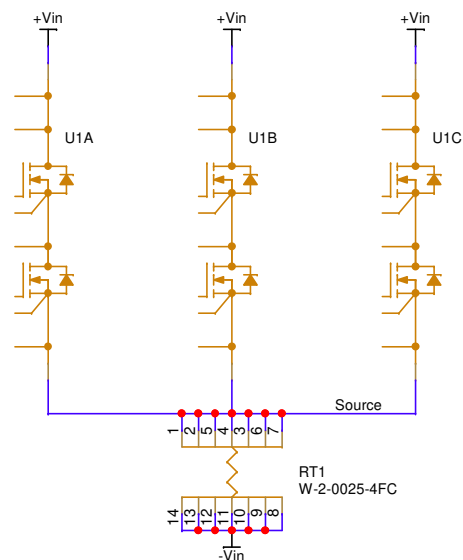
High-frequency capacitors



High Voltage Input



Load Inductor Connections



| | | | |
|---|---|-------|-------------------|
| <p>Wolfspeed</p> <p>535 W Research Center Blvd Fayetteville, AR 72701</p> | | | |
| <p>Title KIT-CRD-CIL12N-YMC</p> | | | |
| Size Custom | <p>Document Number YM Six-Pack Evaluation Board Schematic</p> | | <p>Rev V1</p> |
| Date: | Thursday, March 24, 2022 | Sheet | 1 of 1 |